



arpav

www.arpa.veneto.it  
WATER SECTOR  
NORTHERN ADRIATIC OBSERVATORY

# InforMare

MAY 2012

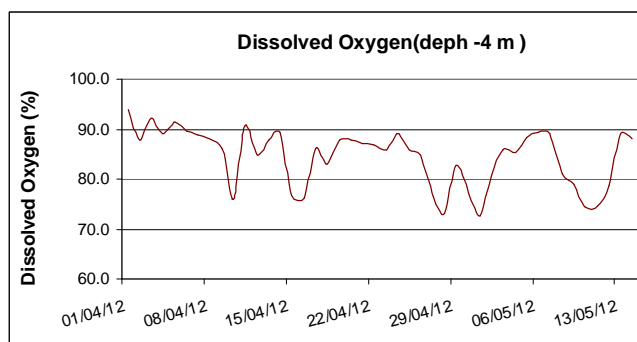
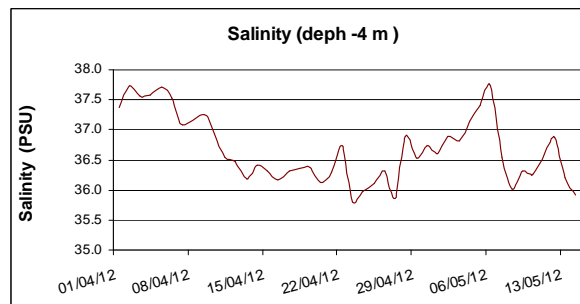
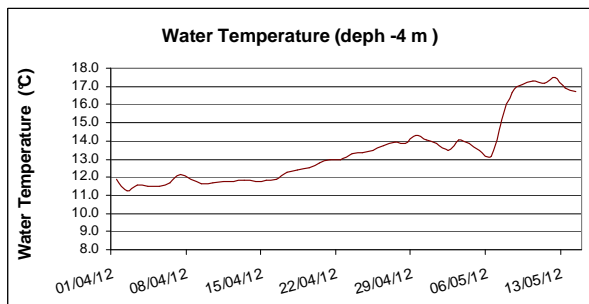
Coverage: regional

Frequency: every month

Period: seasonal

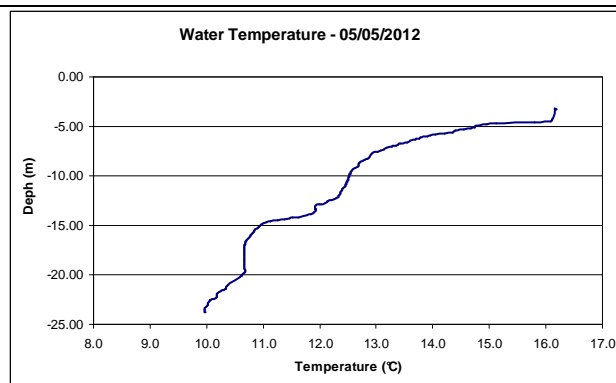
## COASTAL SEA WATER SITUATION

The graphs of the main oceanographic parameters (temperature, salinity and oxygen dissolved in water) measured continuously along the column near by the Experimental Marine Field Buoy which is positioned out in the sea 2 miles from the mouth of the River Sile- show that the values are in keeping with spring weather and climate conditions.



### DID YOU KNOW?

With the arrival of spring the solar irradiation increases and the surface of the sea begins to warm up gradually. As it proceeds towards the summer this layer increases in temperature while the deeper layers are maintained cooler. The layer between these two masses of water is called Thermocline. Only during very strong storms these two layers will stir and the temperature becomes equal over the entire water column. Along Veneto coasts the thermocline is formed only offshore where the depth is greater.



### COASTAL BATHING WATER SITUATION

For the year 2012, in the regional monitoring network for the quality of coastal bathing water, there are 95 control points in the Adriatic Sea and 1 on the Albarella expanse of nautical water.

Each month from May to September, the following three activities are carried out at every checkpoint: measurement of environmental parameters, visual inspections and water samples for bacteriological analysis. The checks are carried out by ARPAV's technicians, with the support of the nautical units of the Veneto Region Coast Guard and Harbour Offices. Details of the situation on May 18 are shown in the table on the right.

**Algae Surveillance:** no potentially toxic algal blooms were detected.

For further information, please visit the website at: [www.arpa.veneto.it/acqua/htm/balneazione.asp](http://www.arpa.veneto.it/acqua/htm/balneazione.asp)

KEY	
	Suitable area
	Temporarily unsuitable area
	Permanently unsuitable area

Situation on May 18, 2012			
<b>Adriatic Sea</b>	<b>95</b>		
S. Michele al Tagliamento (Ve)	6		
Caorle (Ve)	15		
Eraclea (Ve)	2		
Jesolo (Ve)	12		
Cavallino Treporti (Ve)	12		
Venice	18		
Chioggia (Ve)	11		
Rosolina (Ro)	9		
Porto Viro (Ro)	2		
Porto Tolle (Ro)	8		
<b>Albarella Nautical Water</b>	<b>1</b>		
Rosolina (Ro)	1		